

CR5 ORIGINAL[®]

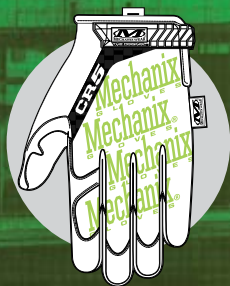


CR5
CUT LEVEL 5



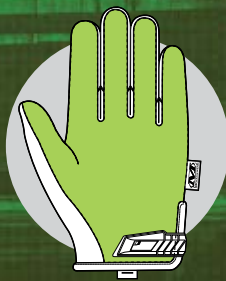
CUT RESISTANT HAND PROTECTION

The CR5 Original[®] is your first line of defense against cut hazards in the workplace. The glove features a synthetic palm with an internal layer of Armortex[®], delivering CE level 5 cut resistance to the palm and fingers. Fluorescent, ANSI-107 compliant TrekDry[®] form-fits the hand and provides a cool, comfortable fit in warm environments. Top it off with a secure Thermal Plastic Rubber (TPR) wrist closure and you have a critical cut resistant tool.



HIGH-VISIBILITY

ANSI-107 compliant TrekDry[®] improves breathability and enhances visual awareness



CUT RESISTANCE

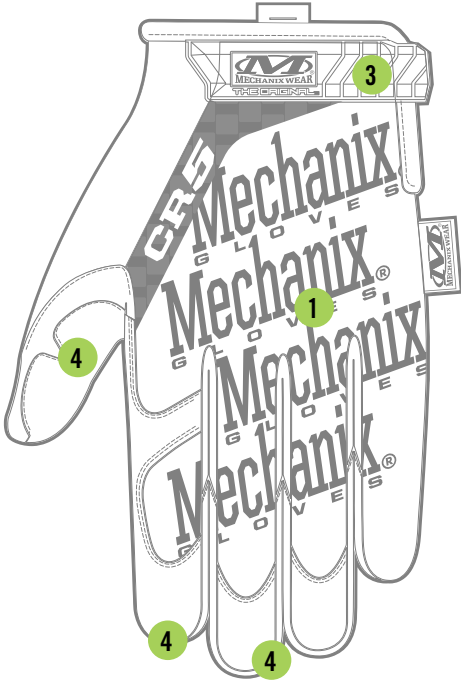
Internal layer of Armortex[®] delivers CE level 5 cut resistance to the palm and fingers.

CR5 ORIGINAL[®]

AVAILABLE COLORS

SMG-C91 HI-VIZ YELLOW

XXXS	XXS	XS	S	M	L	XL	XXL	XXXL
05	06	07	08	09	10	11	12	13



FEATURES

1. Fluorescent, ANSI-107 compliant TrekDry[®] material helps keep hands cool and comfortable.
2. Synthetic palm with an internal layer of Armortex[®] delivers CE level 5 cut resistance.
3. Thermal Plastic Rubber (TPR) closure with hook and loop provides a secure fit.
4. Reinforcement panels in high wear areas improve durability.

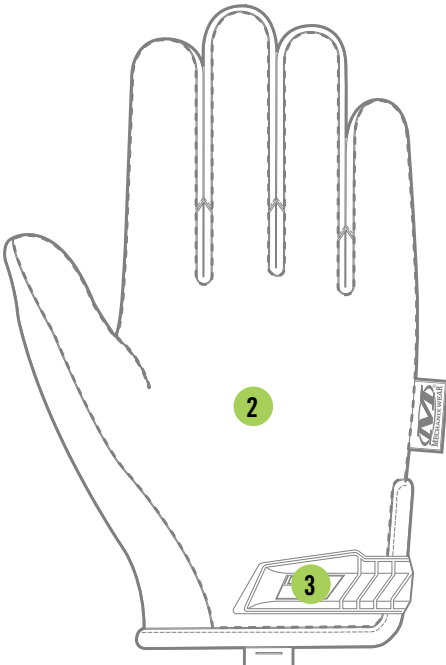
CERTIFICATIONS

CE 2542 EN 388 / EN 420

ANSI 345

INTENDED USES

- Sharp Tool & Material Handling



FURTHER INFORMATION AVAILABLE AT:

Ref: CR5 Original[®]

USA
1-800-222-4296
CANADA
1-877-278-5822

Mechanix Wear, Inc.
28525 Witherspoon Parkway
Valencia CA 91355
www.mechanix.com

Product is imported